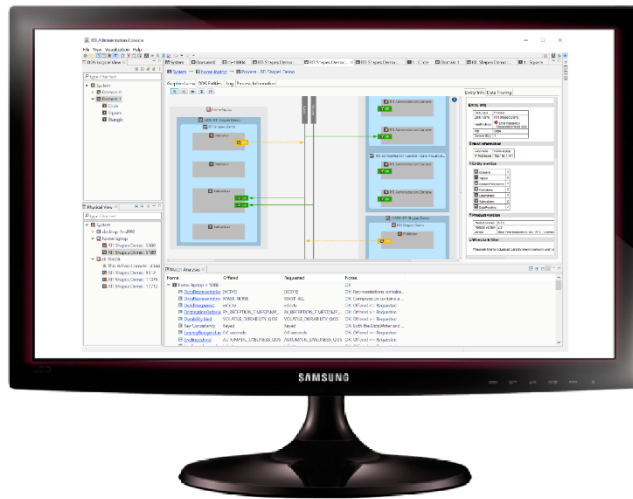


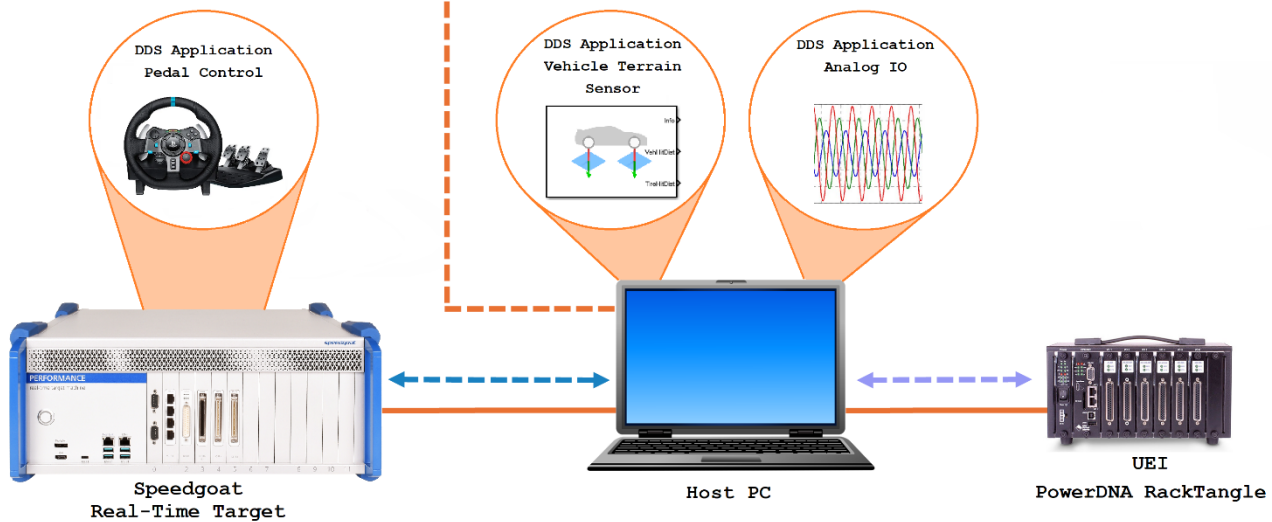


RTI Tools – Administration Console



Colour Legend:

- - - - - RTI Admin Console
- DDS Databus
- - - - - PowerDNA Tethered Communication
- - - - - Speedgoat UDP Communication



RTI Administration Console is an essential tool for direct DDS data visualisation, troubleshooting and monitoring DDS infrastructure services. In this demonstration, several small applications hosting DDS publish and subscribe services are deployed to multiple devices. The Administration Console verifies these services and supports analysis using the following capabilities:

- Detailed views of the Connex system, filtered by System, Process, Domain, or Topic
- Inspect and visualise instances and samples
- Show samples as graphs or tables
- Identify Quality of Service (QoS) mismatches (match graphs)
- Find data type mismatches
- Discover and inspect processes, topics and Data Types